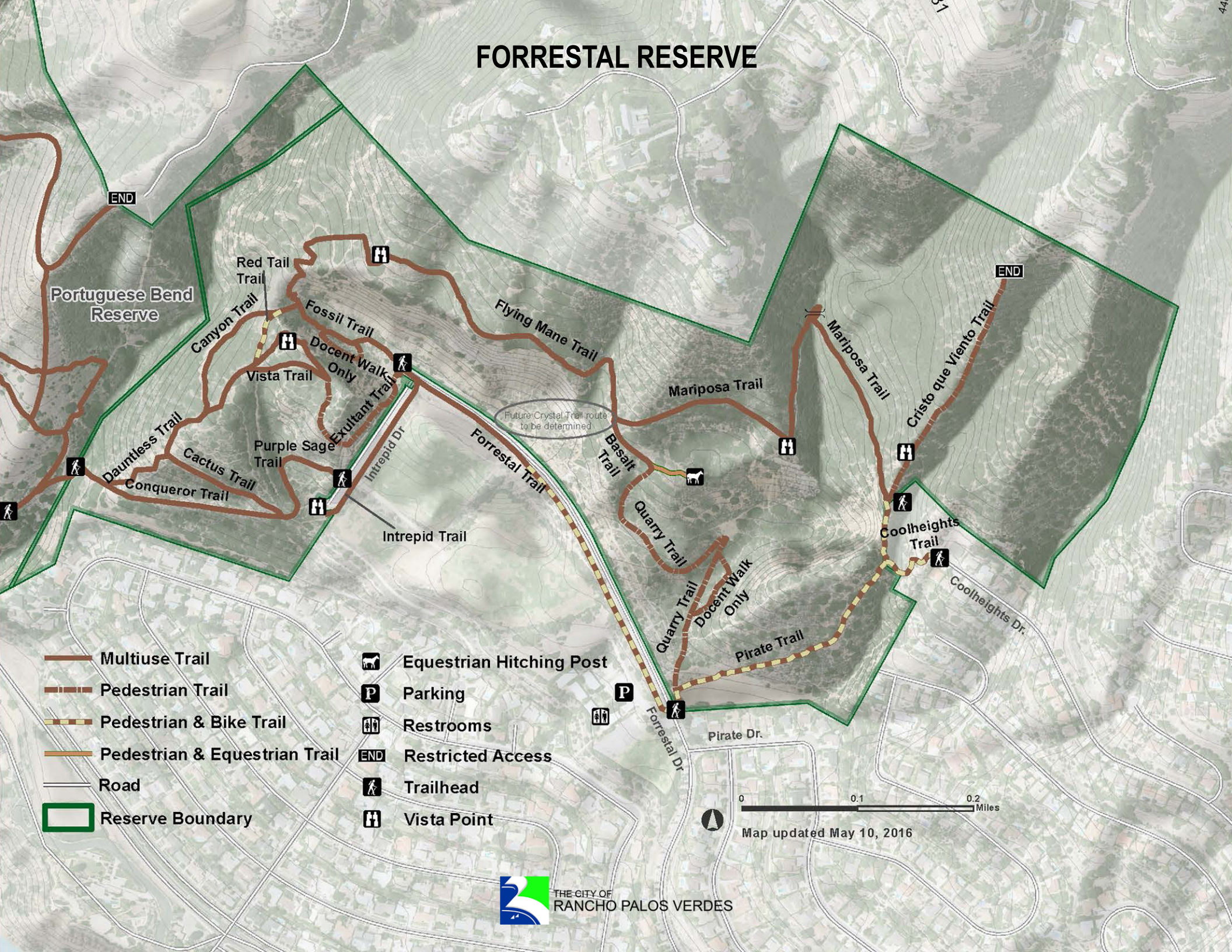


FORRESTAL RESERVE



PALOS VERDES NATURE PRESERVE

PRESERVE RULES

HOURS

One hour before sunrise to one hour after sunset.

Closed during adverse weather conditions. Check trailalerts.rpvca.gov for trail alerts and conditions.

PLEASE STAY ON DESIGNATED TRAILS

• FOLLOW TRAIL USE DESIGNATIONS

- **HIKERS:** yield to horses
- **CYCLISTS:** yield to horses and hikers
- **DOG WALKERS:** where dogs are permitted, always keep on leash (maximum of 6 feet) under your command, and clean up after them
- **WHEELCHAIRS:** Motorized and non-motorized allowed
- **TRASH:** Place trash and recyclable only in designated containers



NOT ALLOWED IN THIS PRESERVE

- Reckless use of trails that endangers people or animals
- Motorized vehicles or radio-controlled models
- Smoking, open flames, or rockets
- Hunting or discharge of any weapons
- Camping, Nudity, or Paragliding
- Animals on the beach
- Creating or damaging trails
- Removing, damaging, or adding any animals, plants, rocks/fossils
- Defacing signs or barriers



PLEASE REPORT VIOLATIONS TO THE PRESERVE INFO REPORTING LINE (310) 491-5775 OR THE LOMITA SHERIFFS STATION (310) 539-1661

RPVMC Sections 6.04.010, 8.28.020, 9.08.010, 9.08.020 and 12.16.010 - 12.16.150,
LA County Code 10.40.060

MUNICIPAL CODES

Animals not allowed on beaches. Code: 6.04.050
Permit required photo and video. Code: 9.16.020
No alcohol on beach. Code: 17.12.320
No remote controlled model. Code 12.16.040
Park hours 1 hr before sun and 1 hr after: 12.16.030
Pets only on authorized trails. Code 12.16.050
Closed Area. Code 12.16.090
No hunting permitted. Code 12.16.110
No overnight camping. Code 12.16.140

No overnight camping. Code: 12.16.140
No fires permitted. Code: 12.16.070
No removal of flora. Code 12.16.010
No motorized vehicles. Code 12.16.020
No aircrafts land or take off. Code 12.16.045
No littering. Code 12.16.060
No nudity. Code 12.16.100
No reckless use on trails. Code 12.16.130
No abandonment of animals. Code 12.16.150