



**43-3829  
extended capacity  
digital answering system**

Thank you for purchasing your Extended Capacity Digital Answering System from RadioShack.

**what's included**

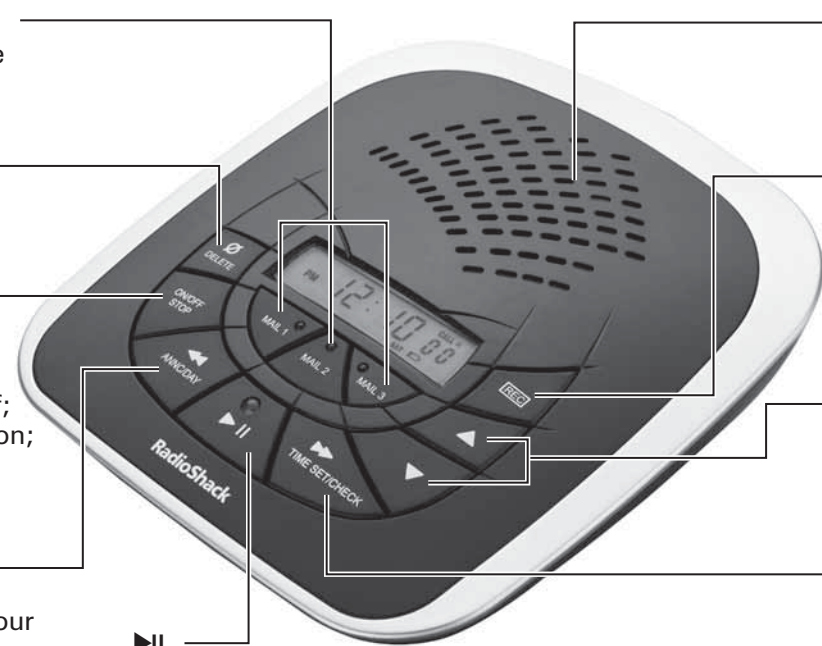
Answering System • AC Adapter • User's Guide

**MAIL1, MAIL2 and MAIL3**  
Callers can leave a message in any box.

**DELETE**  
Deletes a message during playback. Press and hold to delete all played messages in the general mailbox.

**ON/OFF/STOP**  
Turns the system on and off; exits the time-setting function; stops message playback.

**ANNC/DAY/◀◀**  
Press/hold to hear/record your outgoing message; sets the day; repeats the previous or current message.



**Microphone**  
speak here to record your messages.

**REC**  
Sets the hour during the time-setting mode; records a conversation; creates a memo in the general mailbox.

**▲/▼**  
Increases or decreases the volume.

**TIME SET/CHECK/▶▶**  
Sets the time; checks the time and day; skips to the next message.

**▶||**  
Plays messages recorded in the general mailbox; pauses playback of messages; sets the minute during time-setting.

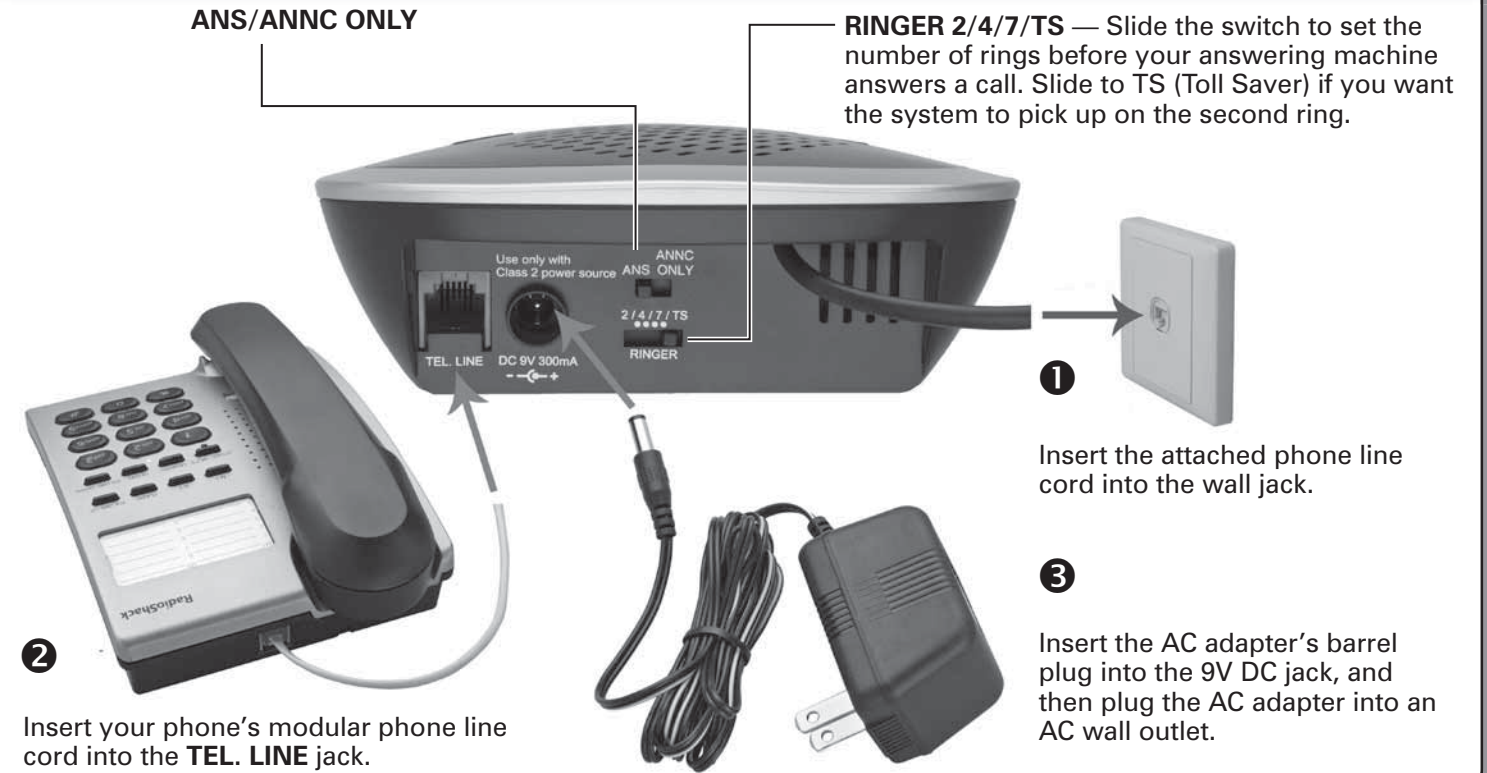
**installing the backup battery**

The backup battery protects your messages, as well as the date and time from being lost in the event of a power interruption. Attach one 9V battery to the terminal in the battery compartment.



\* Battery not supplied; available at your local RadioShack store or online at [www.radioshack.com](http://www.radioshack.com).

**setting up your machine**



**setting your machine to answer calls**

Slide **ANS/ANNC ONLY** at the back to **ANS** to answer calls.

- Notes**
- Callers can leave messages in one of the three personal mailboxes by pressing \*1, \*2 or \*3 before they record their messages.
  - If the caller does not select a specific mailbox, the system will place the message in the general mailbox.
  - When the caller hangs up or has reached the maximum message length (up to five minutes in mailboxes 1, 2 or 3 and one minute in the general mailbox), the system hangs up and resets to answer the next call.

**setting the day and time**

1. Turn the answering machine on and hold down **TIME SET/CHECK/▶▶** until it beeps twice.
2. Press **ANNC/DAY/◀◀** repeatedly until you hear the correct day.
3. Press **REC** repeatedly until you hear the correct hour.
4. Press **▶||** repeatedly until you hear the correct minute.
5. Press **TIME SET/CHECK/▶▶** once. The answering machine plays the time and day you just set.

- Notes**
- Perform each of the above steps within five seconds; otherwise your answering machine exits the setup mode and announces the incomplete time.
  - To exit the time-setting mode at any time, press **ON/OFF/STOP** once.

**remote operation**

While you are away from your home or office, you can use a touch-tone phone or a pulse (rotary) phone with a pocket tone dialer to do any of the following:

- Set your machine to answer call.
- Listen to your messages.
- Record a new memo.
- Record a new outgoing message.
- Delete individual messages.

**remote access**

To access your answering machine:

1. Dial your phone number.
2. After the outgoing message plays and the system beeps, enter your remote operation security code (located on the bottom of your answering machine.)
3. With 10 seconds, enter a remote command on your telephone.

**remote commands**

- 1# - plays new messages in your general mailbox
- 2# - plays all messages in your general mailbox
- 3# - deletes a current message
- 4# - repeats a previous message
- 5# - to stop and exit
- 6# - skips a message
- 7# - turns the system on/ off
- 8# - records outgoing messages
- 9# - records a MEMO
- 0# - to monitor the room
- \*1 - playback mailbox 1 messages
- \*2 - playback mailbox 2 messages
- \*3 - playback mailbox 3 messages

**battery notes**

- Replace the battery when appears on the display.
- Dispose of old batteries promptly and properly. Do not burn or bury them.
- Use only a fresh battery of the required size and recommended type.
- If you do not plan to use your answering system for a month or more, remove the battery. Batteries can leak chemicals that can damage electronic parts.

**CAUTION**  
**RISK OF ELECTRIC SHOCK**  
**DO NOT OPEN**

**WARNING:** To reduce the risk of fire or shock hazard, do not expose this product to rain or moisture.

**CAUTION:** TO REDUCE THE RISK OF ELECTRIC SHOCK, DO NOT REMOVE THE COVER OR BACK. NO USER-SERVICEABLE PARTS INSIDE. REFER SERVICING TO QUALIFIED PERSONNEL.

The lightning symbol is intended to alert you to the presence of uninsulated, dangerous voltage within this product's enclosure that might be of sufficient magnitude to constitute a risk of electric shock. Do not open the product's case.

The exclamation symbol is intended to inform you that important operating and maintenance instructions are included in the literature accompanying this product.



## operating your answering machine

### recording outgoing messages

Your answering machine has a built-in outgoing message, "Hello, please leave a message after the tone." You can use this message or record your own.

1. Hold down **ANNC/DAY/◀**, and speak clearly into the microphone, no more than 10 inches away.
2. Release **ANNC/DAY/◀** when you finish. Your answering machine beeps and automatically plays back your recorded message.

#### Notes

- Your outgoing message must be between one and 60 seconds.
- If you record your own message but wish to revert to the pre-recorded message, press **DELETE** during playback of your outgoing message.

### using announce only message

This feature lets you set the system to play a message for the caller. The caller cannot leave a message. You can use the answering machine's built-in message that says "No one is available to take your call.", or record your own (see **recording outgoing messages**).

When your answering machine receives a call, it plays back the announce-only message.

1. To activate this function, slide **ANS/ANNC ONLY** to **ANNC ONLY**.
2. To turn off announce-only, set **ANS/ANNC ONLY** to **ANS**.

#### Notes

- The maximum length for your announce-only recording is 60 seconds. Your recording does not affect the original outgoing message. Each outgoing message can be recorded, played back, or deleted independently.
- When your answering machine is set to **ANNC ONLY**, you cannot use the remote commands to record incoming messages.

### 2-way recording

You can record both sides of a conversation on

any phone connected to the same phone line as the answering machine.

1. Press **REC** during the conversation to start recording. The clock timer starts.
2. Press **REC** again to stop recording; or, when your answering machine detects the CPC (Calling Party Control), the conversation will stop automatically.

**Important:** Be sure to check your local, state and federal laws before using this product to record any telephone conversation in order to determine that your use is in compliance with such laws or guidelines.

### screening calls

You can screen your calls by letting your machine answer while listening to the caller's message via the speaker. If you want to answer the call, pick up any phone sharing the same line connection as your machine. The machine stops recording.

#### Note

If you pick up the phone and the outgoing message continues to play, press **ON/OFF/STOP** to stop playback.

### recording a memo

You can record a memo for your general mailbox, or for the three personal mailboxes, MAIL1/2/3.

#### recording in your personal mailbox:

1. Press and hold the corresponding **MAIL1/2/3** to leave your message.
2. When the machine beeps, speak clearly into the microphone at least 10 inches away from your answering machine.
3. When you finish, release the button.

#### recording in your general mailbox:

1. Press and hold **REC**. Your answering machine beeps and then the main LED flashes quickly.
2. Speak clearly into the microphone at least 10 inches away from your answering machine. The clock timer begins.

3. Release **REC** when you finish your message. The main LED flashes slowly to indicate your new memo has been recorded.

#### Note

Recording stops automatically if you exceed the maximum recording length. The display shows the time and the system saves your incomplete message.

### playing and managing memos and messages

Your machine can store about 60 minutes of messages (99 messages maximum).

The main LED or the LED of the respective mailbox 1, 2 or 3 flashes slowly to indicate one or more messages when received. The message counter shows the total number of messages recorded in all mailboxes.

- To play messages recorded in one of the mailboxes, press the corresponding mailbox **MAIL1/2/3** once.
- To play messages recorded in the general mailbox, press **▶II**.
- To pause playback, press **▶II**. Press **▶II** again to resume playback.
- To repeat the current message, press **ANNC/DAY/◀**; to repeat a previous message, press and hold **ANNC/DAY/◀**.
- To skip to the next message, press **TIME SET/CHECK/▶▶**.
- To stop playback, press **ON/OFF/STOP**.

#### Notes

- If there are no messages, your answering machine sounds two tones.
- After playing each new message, the system announces the day and time the message was recorded.
- Each message will be treated as a new message until you playback the entire message. If the message is played for the first time, **NEW** appears during playback.

## FCC information

### FCC Statement

Your answering machine complies with Part 68 of FCC Rules and the requirements adopted by the ACTA. On the back of your answering machine is a label with this FCC Product Identification number in the format US:AAAEQ##TXXXX. If requested, you must provide this information to the telephone company.

Note: You must not connect your answering machine to:

- coin-operated systems
- most electronic key telephone systems
- party-line systems

Connection to party line service is subject to state tariffs. Contact the state public utility commission, public service commission, or corporation commission for information.

We have designed your answering machine to conform to federal regulations, and you can connect it to most telephone lines. However, each product that you connect to the telephone line draws power from the telephone line. We refer to this power draw as the device's ringer equivalence number, or REN on the bottom of your answering machine.

If you use more than one phone or other device on the line, add up all of the RENs. If the total is more than five (three in rural areas), your telephones might not ring. If ringer operation is impaired, remove a device from the line.

In the unlikely event that your phone causes problems on the phone line, the phone company can temporarily discontinue your service. If this happens, the phone company attempts to notify you in advance. If advance notice is not practical, the phone company notifies you as soon as possible and advises you of your right to file a complaint with the FCC.

Also, the phone company can make changes to its lines, equipment, operations, or procedures that could affect the operation of this telephone. The telephone company notifies you of these changes in advance, so you can take the necessary steps to prevent interruption of your telephone service.

### FCC Wants You to Know

This equipment has been tested and found to comply with the limits for a Class B digital device, pursuant to Part 15 of the FCC Rules. These limits are designed to provide reasonable protection against harmful interference in a residential installation. This equipment generates, uses, and can radiate radio frequency energy and, if not installed and used in accordance with the instructions, may cause harmful interference to radio communications.

However, there is no guarantee that interference will not occur in a particular installation. If this equipment does cause harmful interference to radio or television reception, which can be determined by turning the equipment off and on, the user is encouraged to try to correct the interference by one or more of the following measures:

- Reorient or relocate the receiving antenna.
- Increase the separation between the equipment and receiver.
- Connect the equipment into an outlet on a circuit different from that to which the receiver is connected.

### SURGE PROTECTION

Your telephone has built-in protection circuits to reduce the risk of damage from surges in telephone line and power line current. These protection circuits meet or exceed the FCC requirements. However, lightning striking the telephone or power lines can damage your telephone.

Lightning damage is not common. Nevertheless, if you live in an area that has severe electrical storms, we suggest that you unplug your phone when storms approach to reduce the possibility of damage.

### SETUP

Your TAD connects directly to a modular telephone line jack. If your telephone wiring does not have a modular jack, you can update the wiring yourself using jacks and adapters (available at your local RadioShack store), or have the telephone company update the wiring for you. You must use compatible modular jacks that are compliant with Part 68 of FCC Rules and the requirements adopted by the ACTA. The telephone cord and modular plug provided is Part 68 compliant for connecting to the telephone company network.

Note: The USOC number of the jack to be installed is RJ11C (or RJ11W for a wall plate jack).

If your home has specially wired alarm equipment connected to the telephone line, be sure that installing the TAD does not disable your alarm equipment. If you have questions about what will disable your alarm equipment, contact your telephone company or a qualified installer.

Please follow instructions for repairing, if any (e.g. battery replacement section); otherwise do not alternate or repair any parts of device except specified.

### hints and tips

If the storage memory of your answering machine runs out during a caller's message, it stops recording, announces "Memory is full", and then hangs up. Subsequent callers will hear "No one is available to take your call" after 10 rings, and the system waits for a remote command (see **remote operation**).

Additional messages or memos cannot be recorded until you delete some of the old ones.

### limited one-year warranty

This product is warranted by RadioShack against manufacturing defects in material and workmanship under normal use for one (1) year from the date of purchase from RadioShack company-owned stores and authorized RadioShack franchisees and dealers. For complete warranty details and exclusions, check with your local RadioShack store.

RadioShack Customer Relations  
300 RadioShack Circle, Fort Worth, TX 76102

04/04

### care and maintenance

Keep your answering machine dry; if it gets wet, wipe it dry immediately. Use and store your answering machine in room temperature environments only. Handle your answering machine carefully; do not drop it. Keep your answering machine away from dust and dirt, and wipe it with a damp cloth occasionally to keep it looking new.

If your answering machine is not performing as it should, take it to your local RadioShack store for assistance. To locate your nearest RadioShack, use the store locator feature on RadioShack's website ([www.radioshack.com](http://www.radioshack.com)), or call 1-800-The Shack (843-7422) and follow the menu options. Modifying or tampering with the product's internal components can cause a malfunction and might invalidate its warranty and void your FCC authorization to operate it.

